

C/S Supertrak[®] Cubicle Curtain Track

C/S/B
76.7
NBS specification guide: N10

• Cubicle Curtain Track Components • Uplighters



C/S **Supertrak**[®] Cubicle Curtain Track



▲ **Worcestershire Royal Hospital (UK)**
This PFI build project uses C/S **Supertrak** throughout the hospital.

There is curtain track and then there is **Supertrak!**

C/S **Supertrak**[®] is the most effective cubicle curtain track system currently available, featuring an innovative design which combines a totally rigid structure with the flexibility of configuration to meet individual requirements. It is available in a satin anodised aluminium finish, or can be made to order in any BS, RAL or custom colour.

The system incorporates a continuous pvc liner running inside the full length of the cubicle which eliminates joints on the running surface, so allowing the glides to run quietly and without snagging - a feature unique to C/S **Supertrak**[®].

Glides and hooks attached to the curtain are loaded through a slot in the track from one position which eliminates the laborious task of hooking and unhooking found in conventional systems.

The runner access slot can be positioned at virtually any point of the system including the front so that loading can easily be achieved without disturbing the patient, the curtain subsequently being anchored at the bed head end.

C/S **Supertrak**[®] is used in hospitals, health centres, nursing homes and hotels throughout the world and is ideal for export. Installations are manufactured to site requirements then shipped overseas in easily handled flat-pack containers which minimise freight costs.

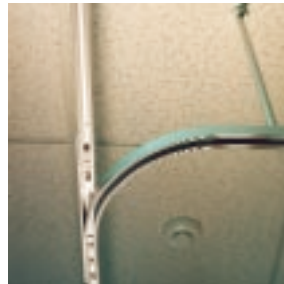


C/S **Supertrak**[®] Cubicle Curtain Track provides:

- Flexible configurations satisfy individual requirements.
- Eliminates snagging caused by joints.
- Glides run smoothly and quietly.
- Enables curtains to be changed easily.
- Safety release mechanism.
- Available anodised or powder coated in any BS, RAL or custom colour.
- Rigid and durable.
- Conforms to HTM66.
- Modular system - ideal for export.

Technical Support

For further technical assistance or samples please contact us on:
+44 (0) 1296 611000



Worcestershire Royal Hospital (UK) ▲



Worcestershire Royal Hospital (UK) ▲

C/S Supertrak® Cubicle Curtain Track



▲ Worcestershire Royal Hospital (UK)

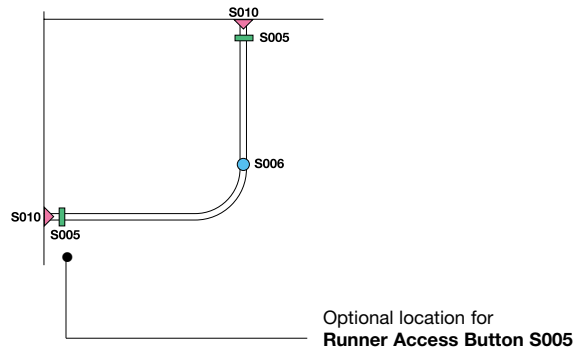


▲ Malmaison Hotel Manchester (UK)



▲ Crieff Hospital (Scotland)

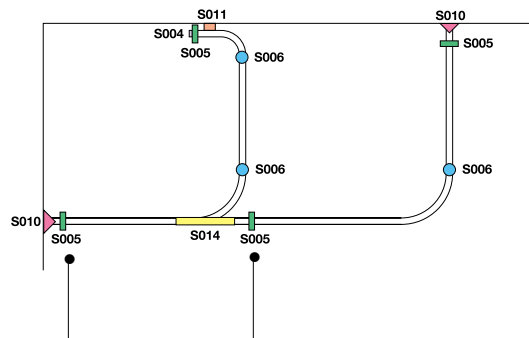
Single Bed Layout



C/S **Supertrak** will satisfy every possible configuration.

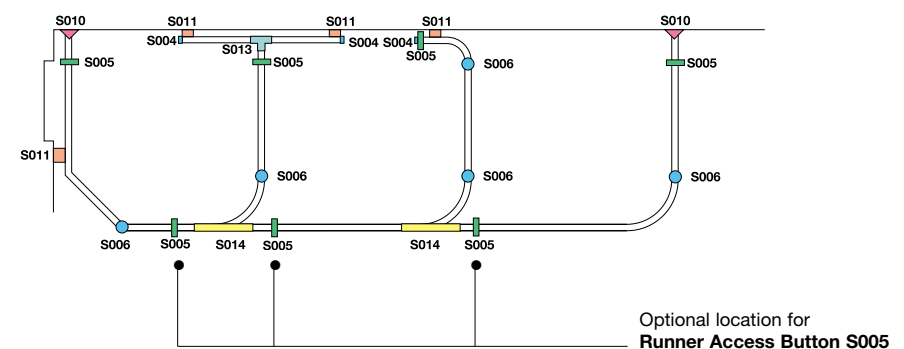
Layouts shown here indicate the possible positions of the components used for various typical bed layouts, they are intended as a guide only.

Two Bed Layout



Note: Part numbers refer to the items shown on the page opposite

Three Bed Layout

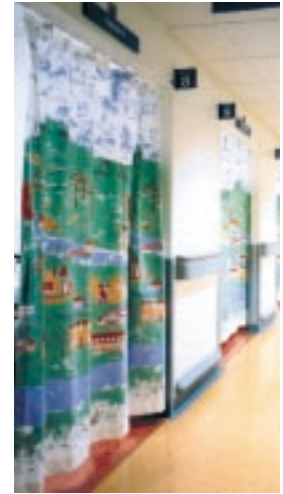




▲ Worcestershire Royal Hospital (UK)



▲ Bassetlaw Hospital Worksop (UK)



▲ Hairmyres Hospital (Scotland)

Supertrak Components

Direct Ceiling Fixing

By means of concealed screws located at 1m centres



Rod Suspender S006

An aluminium rod attached to the track locates at the ceiling in an aluminium sleeve

Two grub screws, allowing 20mm adjustment in length, retain the rod in the sleeve



Supertrak can be specified to release from the ceiling support at a stated load, where the possibility of self-inflicted injury to patients is a consideration

Rod Collar S007

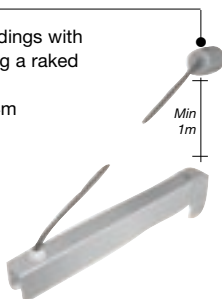
Situated at the rod entry point through the suspended ceiling



Wire Suspender S009

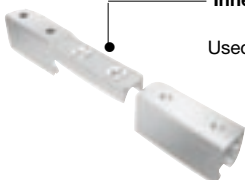
Recommended in old buildings with weak ceilings necessitating a raked fixing to walls, or where suspension exceeds the 4m maximum for rods

Minimum fixing height 1m above wall bracket



Inner Connecting Piece S018

Used to connect sections of track



Glide with Hook S003H

Manufactured from self lubricating nylon

Recommended usage is 10 per metre

Also available in stainless steel



Wall Bracket S010

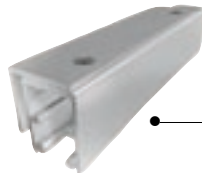
Used in a suspended system to fix the track end to the wall at 90°

An alternative bracket is available where the angle between wall and track is not 90°



Parallel Wall Bracket S011

Used where support is required when the track end returns parallel to a wall



Fixed by two screws

Runner Access Button S005

A spring loaded button can either be located near the commencement of the track or at the front of the track (optional position) to allow easy access when inserting or removing curtains. There is an anchor at the bed head end to secure end glide.



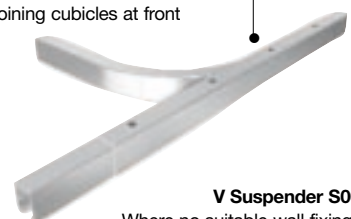
Bends S015

Can be cut to achieve various angles to produce assembled cubicles



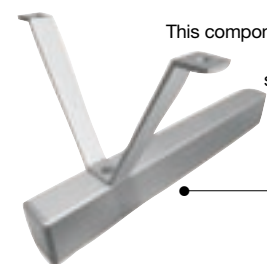
Overlapping Joint S014

Supports adjoining cubicles at front of track



V Suspender S008

Where no suitable wall fixing is available



This component replaces the rod suspender to prevent lateral sway

Junction S012

For linking adjacent cubicles where a return is necessary at the front of the track



End Cap S004

Used to close off track end



T Piece S013

Acts as a junction where tracks are joined at 90°



C/S Supertrak[®] Cubicle Curtain Track



▲ St Johns Hospital Livingstone (Scotland)



▲ Bassetlaw Hospital Worksop (UK)

The Uplighter provides a more versatile and effective illumination alternative to standard hospital ward lighting, by utilising the unique design of the C/S Supertrak track. Utilising the latest lighting technology we have produced a slender diameter luminaire, which produces an excellent lighting output.

Uplighters

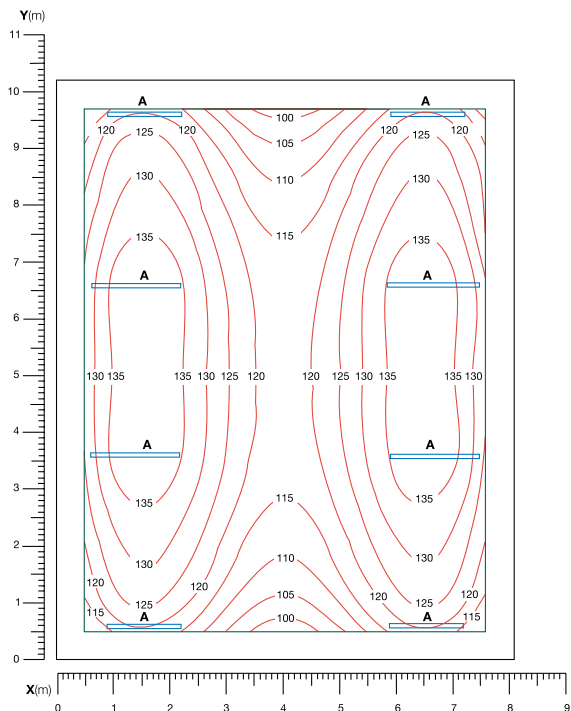
Per 8 square metres of ward an uplighter will yield an average of 130 Lux (assuming reasonable reflectance from light coloured surfaces).

The CIBSE guide for healthcare environments recommends a minimum of 100 Lux for ward areas.

In many situations, one uplighter per bed will deliver the general ward lighting. Designed for use on standard mains voltage (220/240V and 50/60 Hz), the Supertrak uplighter should be mounted no less than 500mm below the ceiling, for the best results.

The uplighter is supplied complete with lamp as standard and has a clear acrylic cover to prevent ingress of dust and insects. This is set within the extruded aluminium body to eliminate edge glare. Installation is by screw fixing to the top of the cubicle curtain track. Wiring, from a wall mounted flex outlet, enters the track top where it is concealed until emerging via a grommet into the luminaire. Alternatively, the wire can be totally concealed and fed into the curtain track via a suspension rod (S006) which is situated immediately adjacent to the uplighter.

- Lightweight - only 4.5kg.
- Low energy - 38 circuit watts, giving a 36% energy saving over conventional High Frequency T8 systems and 47% saving over Switchstart versions. Reduces energy wastage and running costs.
- Highest lumen output per watt for fluorescent lamps at 104 lumens per watt.
- More accurate High Frequency lighting control, flicker and noise free.
- Easy to install, replace and maintain.
- Complies with and carries CE marking.
- Standard in satin silver anodised aluminium, custom colour options are also available.
- High output version CT49 now available.



Illumination using Uplighter

| | | | | |
|----------------|--|-------------|---------------------------------|-------------|
| Grid: | Working plane at Z = 0.00m with view direction (0.00, 0.00, -1.00) | | | |
| Calculation: | Surface plane illuminance (lux) | | | |
| Result type: | Total | | | |
| A: | CU135 Aluminium Reflector | | | |
| Average | Min/Ave | Min/Max | Room Surface Maintenance Factor | Scale |
| 125 Lux | 0.78 | 0.69 | 0.90 | 1:75 |
| Models: | CT35 | 3650 Lumens | | |
| | CT49 | 4900 Lumens | | |

C/S Supertrak® UK and Global Projects

Ninewells Hospital - Dundee, Scotland

Ayr Hospital - Ayr, Scotland

Hairmyres Hospital - East Kilbride, Scotland

Kings College Hospital - London, England

Dumfries & Galloway Hospital - Dumfries, Scotland

William Harvey Hospital - Ashford, England

Victoria Hospital - Kirkcaldy, Scotland

Western General Hospital - Edinburgh, Scotland

Causeway Hospital - Coleraine, Northern Ireland

Worcestershire Royal Hospital - Worcester, England

St James Hospital - Dublin, Eire

Bassetlaw Hospital - Worksop, England

Inverclyde Royal Hospital - Greenock, Scotland

Wootton Bassett School - Swindon, England

Mid Ulster Hospital - Magherafelt, Northern Ireland

Coatbridge Health Centre - Coatbridge, Scotland

Broomfield Hospital - Chelmsford, England

Malmaison Hotel - Manchester, England

Royal Berkshire Hospital - Reading, England

St Johns Hospital - Livingston, Scotland

Selayang Hospital - Malaysia

Marine Hospital - Gdynia, Poland

St Sophia Hospital - Warsaw, Poland

Asian Hospital - Manila, Philippines

Makati Hospital - Philippines

Riverside Hospital - Philippines

Selayang Hospital - Malaysia

Butterworth Factory - Malaysia

Sysprotec - Santiago, Chile

Gorseinon Hospital - Swansea, Wales

Rotherham General Hospital - England

Larkfield Hospital - Greenock, Scotland

C/S Group® Other Products

C/S Wallglaze™
Performance Coatings



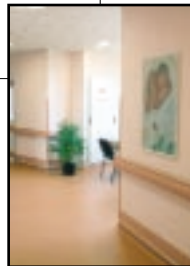
C/S Pedisystems™
Entrance Flooring Systems



C/S Allway®
Expansion Joint Covers
Systems



C/S Acrovyn™
Wall, Door and Corner
Protection



C/S Airfoil®
Solar Shading Components



C/S Explovent®
Explosion Venting Systems



United Kingdom

Construction Specialties (UK) Ltd
Conspec House, St Andrews Way,
Bicester Road, Aylesbury, Bucks HP19 8AF



BSI EN ISO 9001:2000
Certificate No FM21206

Telephone (+44) 1296 611000
Fax (+44) 1296 399444
Email supertrak@c-sgroup.co.uk
Website www.c-sgroup.co.uk

Middle East

CONSTRUCTION SPECIALTIES MIDDLE EAST LLC

1705 Dubai World Trade Centre
PO Box 9260, Dubai, UAE

Telephone (+971 4) 331 2167
(+971 4) 331 1673
Fax (+971 4) 331 5023
Email cs_dubai@emirates.net.ae
Website www.c-sgroup.com

Singapore

CONSPEC (SINGAPORE) PTE. LTD

298 Tiong Bahru Road, #13-01 Central Plaza,
Singapore 168730

Telephone (+65) 6 276 4276
Fax (+65) 6 273 7557
Email solutions@c-sgroup.com.sg
Website www.c-sgroup.com

Uruguay

C/S GROUP AMERICA LATINA SRL
Camino Pavia 2723, 12100 Montevideo, Uruguay

Telephone (+5982) 525 0126
Fax (+5982) 525 2489
Email c-sgroup@adinet.com.uy
Website www.c-sgroup.com



C/S GROUP Worldwide operations

- United Kingdom
- France
- Germany
- Austria
- Italy
- Spain
- Poland
- USA
- Canada
- Australia
- New Zealand
- Singapore
- Hong Kong
- Taiwan
- UAE
- Uruguay